
iGET **HOME** [®] **GUARD**

Helpdesk / Technical Support

- ✉ www.iget.eu/cs/helpdesk-centrum-cs
- 🌐 <https://helpdesk.intelek.cz/>

iGET **HOME** **GUARD**



Heat-sensing HD CCTV Kit **Quick Start Guide - EN**

For the latest, up-to-date manual, please visit
www.iget.eu



CAUTION

**RISK OF ELECTRIC SHOCK
DO NOT OPEN**



**TO REDUCE THE RISK OF ELECTRIC SHOCK,
DO NOT REMOVE THE COVER.**

NO USER SERVICABLE PARTS INSIDE.

REFER SERVICING TO QUALIFIED PERSONNEL.



The lightning flash with arrowhead symbol, within an equilateral triangle, is intended to alert the user to the presence of non-insulated “dangerous voltage” within the product’s enclosure that may be of sufficient magnitude to constitute a risk of electric shock.



The exclamation point within an equilateral triangle is intended to alert the user to the presence of important operating and maintenance (servicing) instructions in the literature accompanying the appliance.

WARNING:

**TO PREVENT FIRE OR SHOCK HAZARD, DO NOT
EXPOSE THIS UNIT TO RAIN OR MOISTURE**

CAUTION:

**TO PREVENT ELECTRIC SHOCK, ENSURE THE PLUG
IS FULLY INSERTED INTO A MAINS SOCKET**

IMPORTANT SAFEGUARD



All lead-free products offered by the company comply with the requirements of the European law of the Restriction of Hazardous Substances (RoHS) directive, which means our manufacturing processes and products are strictly “lead-free” and without the hazardous substances cited in the directive.



The crossed-out wheeled bin mark symbolizes that within the European Union the product must be collected separately at the product’s end-of-life. This applies to your product and any peripherals marked with this symbol. Do not dispose of these products as unsorted municipal waste. Contact your local dealer for procedures for recycling this equipment.

DISCLAIMER

We reserve the right to revise or remove any content in this manual at any time. We do not warrant or assume any legal liability or responsibility for the accuracy, completeness, or usefulness of this manual. The content of this manual is subject to change without notice.

RECOMMENDATIONS

- **AVOID DUSTY LOCATIONS:** Excessive build-up of dust may cause the unit to fail.
- **INSTALL IN VENTILATED SPACE:** Ensure adequate airflow around the DVR to prevent overheating.
- **DO NOT EXPOSE TO MOISTURE:** Exposing the unit to water poses high risk of electric shock.
- **DO NOT DROP:** Doing so could damage internal components.
- **DO NOT OPEN CHASSIS:** No user-serviceable parts inside.

TRADEMARKACKNOWLEDGEMENTS

- Internet Explorer™, Microsoft™&Windows™ are registered trademarks of Microsoft Corporation.
- Apple™, iPhone™, iPad™ and iTunes™ are registered trademarks of Apple Computer, Inc.
- Android™ and Google Play™ are registered trademarks of Google Inc

WARRANTY AND TECHNICAL SUPPORT

To help you make the most of this product you’ll find a host of information including full product manuals, FAQ, troubleshooting guides and a support service if you have specific questions, available at our support website : ***homeguardworld.com/support***.

CONTENTS

CONNECTING YOUR SYSTEM

4

- 5 Introduction
- 6 Package Contents
- 7 DVR Layout
- 9 Connecting the DVR
- 10 Mounting the Cameras
- 11 Using Remote Control
- 12 Using the Mouse

BASIC OPERATION

13

- 14 Start-up Wizard
- 17 Main Interface
- 19 PIR Setup
- 20 Record
- 21 Playback

CONNECTING SMART DEVICE

22

- 23 Before Start
- 23 Get the App
- 24 User Interface
- 25 For iPhone
- 26 For iPad
- 27 For Android Phone

CONNECTING TO PC&MAC

28

- 29 Homeguardsafe Software for PC & Mac
- 32 Remote Access via Web Client
- 35 Cloud Access

TECHNICAL SUPPORT

36

- 37 Technical Specifications
- 38 Technical Q&A
- 39 Warranty & Support
- 40 Camera Installation Template

CONNECTING
YOUR SYSTEM

1

1.1 Introduction

Congratulations on your purchase of this Homeguard Hybrid DVR. Homeguard offers a complete CCTV solution for home or office security, featuring high quality cameras, easy setup and configuration, motion detection and network connectivity.

This system features:

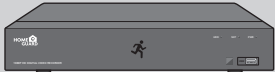
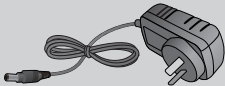



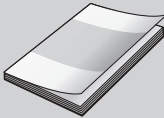
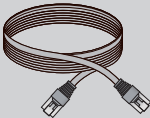

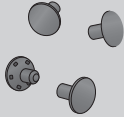
- H.264 Video compression and G.711 audio compression
- Support CVBS, AHD, TVI, CVI and IPC
- Provides a convenient User Interface
- 4/8 CH Composite Input Connectors
- Supports 1080p/720p/960H/D1/CIF recording formats
- With the network specific codec, network transfer enabled regardless of the recording conditions
- Hard Disk overwrite function
- Mass storage hard disk backup through high-speed USB 2.0
- Simultaneous Record and Playback of 4/8/16-channel video data
- Various Search Modes (Search by Time, Event, Backup and Motion Detection)
- Various Recording Modes (Manual, Scheduled Recording)
- Remote Monitoring function by Network Viewer and Mobile Viewer

1.2 Package Contents

Please unwrap the product, and place the product on a flat place or in the place to be installed. Please check the following contents are included in addition to the main unit.

- The appearance of the components may differ from the image shown.
- Accessory category and quantity may differ depending on sales region.

Check the contents of your DVR package against this checklist. If anything is missing or damaged, please do not use the system, and inform your supplier as soon as possible.

		
Hybrid DVR	Power Adapter	Mouse
		
Remote Control / Battery (AAA x 2)	User Manual / Software	Quick Start Guide
		
Ethernet Cable	SATA Cable (for models having no installed HDD)	HDD Fixing Screw

NOTE

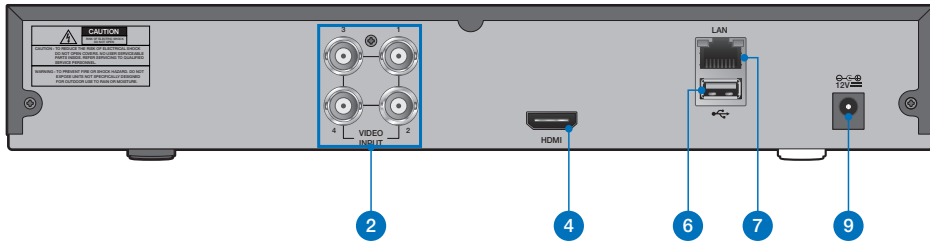
This manual covers both 4 channel and 8 channel versions of the Homeguard DVR kits model: HGDVK-44402 / 44404 / 84402 / 84404 / 84408 / 164408 / 164416.

1.3 DVR Layout

■ Rear Panel

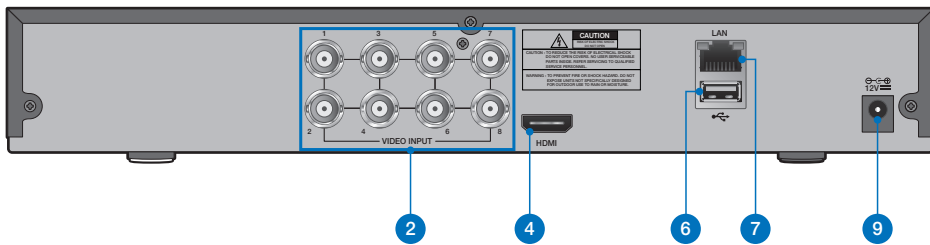
4CH DVR

DVR Kits Model: HGDVK-44402 / 44404



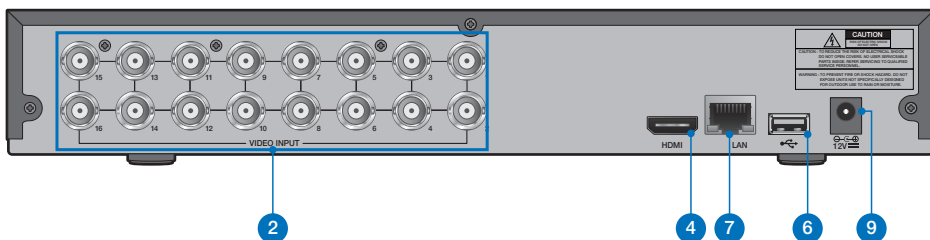
8CH DVR

DVR Kits Model: HGDVK-84402 / 84404 / 84408



16CH DVR

DVR Kits Model: HGDVK-164408 / 164416

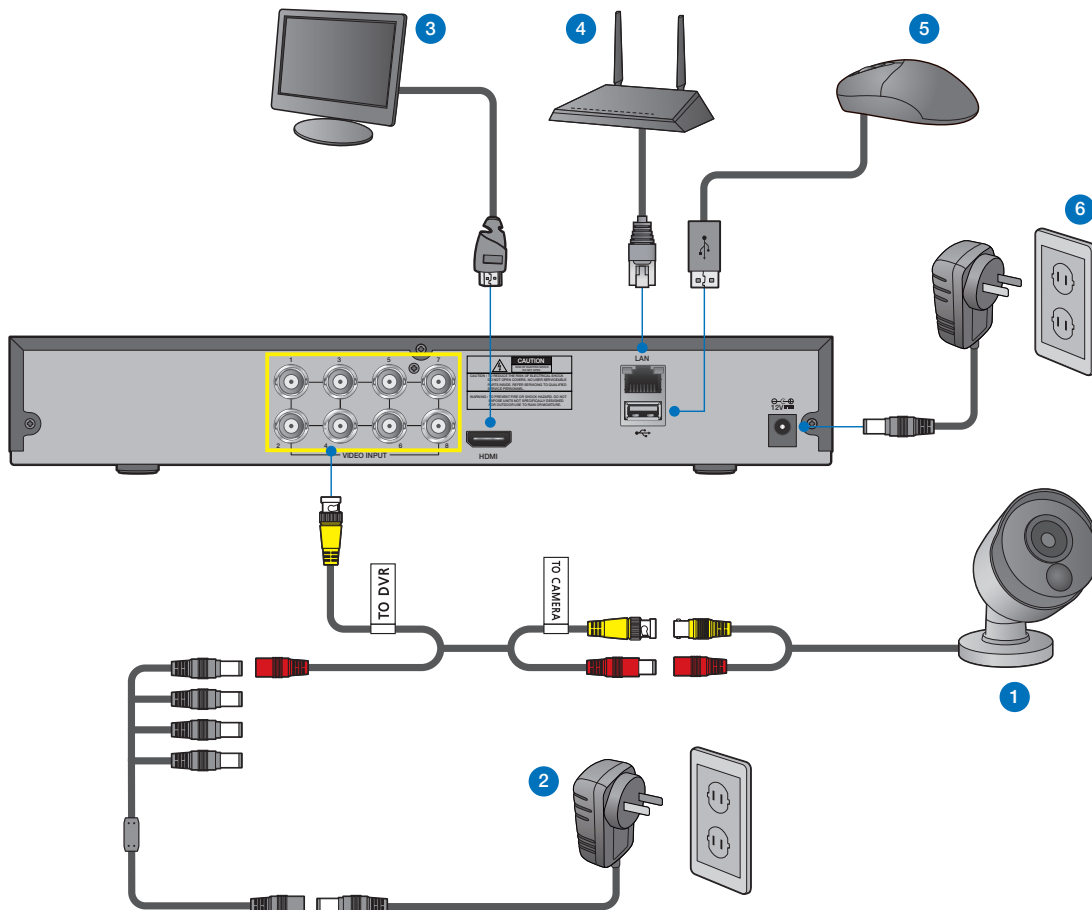


■ Front Panel



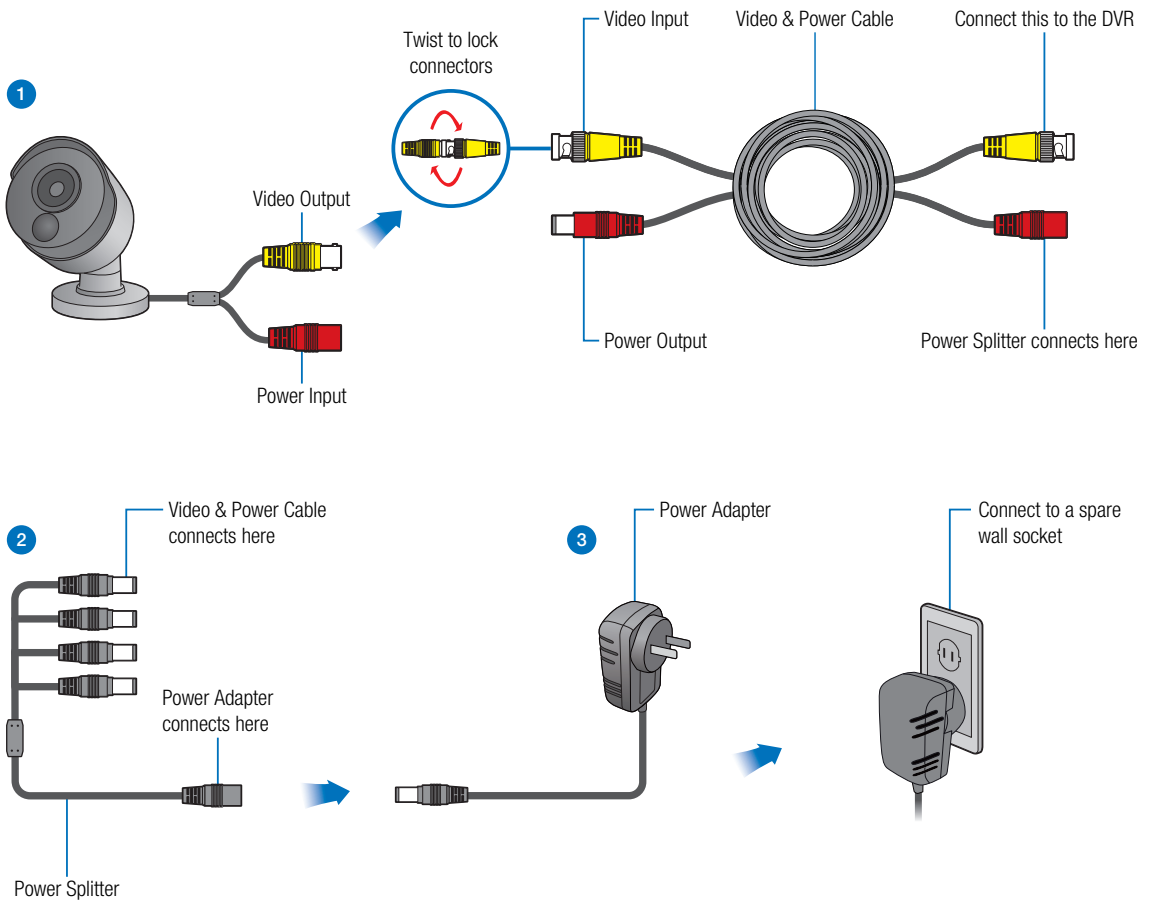
Part Names	Functions
2	4x / 8x / 16x BNC Video Connectors: For each camera input
4	HDMI Output: For most modern TVs
6	USB Ports: For USB mouse and external storage
7	LAN Port: To connect your DVR to the network
9	Power Connector: To power the DVR
10	HDD LED: Flashes when the HDD is in use
11	Network LED: Flashes when the internet is connected
12	Power LED: Indicates the DVR is turned ON when lit
13	IR Receiver: Receives the signal from the remote control
14	USB Ports: For USB mouse and external storage

1.4 Connecting the DVR



- 1 Connect the camera's video input (yellow) and power supply (red) connectors to the BNC extension cables. Then connect the BNC video input (yellow) to the video input port on the rear panel. (Repeat Step 1 for the remaining cameras.)
- 2 Connect the camera's power supply (red) to the power splitter. Then connect the other end of the power splitter to the power adapter for Cameras and plug in the adapter to a wall outlet. (Repeat Step 2 to connect the cameras to the second set of power splitter and power adapter.)
- 3 Depending on the monitor port, connect the HDMI or cable from your monitor to the HDMI port on the rear panel.
- 4 Connect one end of the Ethernet cable into your router's LAN port, and the other end of the cable to the Ethernet port on the rear panel.
- 5 Connect the mouse to the USB Port on the front or back panel of the DVR.
- 6 Connect the power adapter for DVR to the DC 12V port on the rear panel and the power plug into a wall outlet. The DVR will automatically power on and the startup wizard will appear on your monitor.

1.5 Mounting the cameras

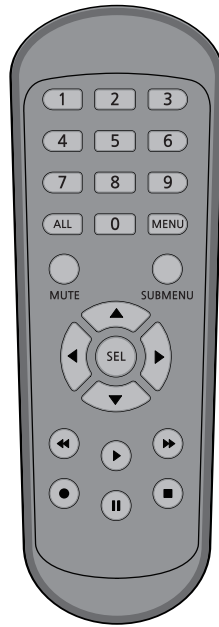


- 1 Connect the video output and power input connection on the camera to the corresponding connections on the supplied video & power cable.
- 2 Connect the supplied power splitter to the other end of the video & power cable. This provides power to multiple cameras using a single power adapter.
- 3 Connect the other end of the power splitter to the supplied power adapter then connect the power adapter to a power outlet.

TIP

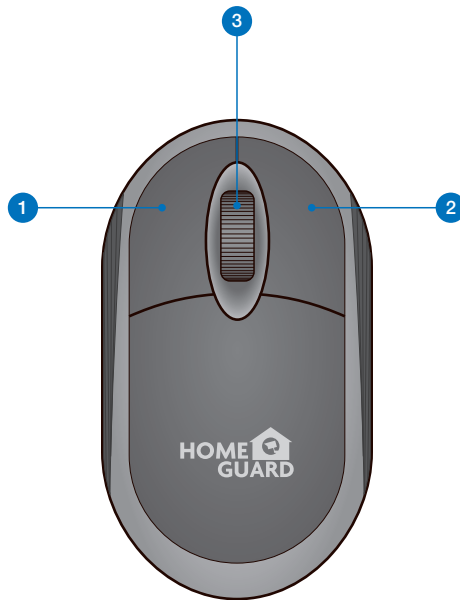
Each Homeguard camera is supplied with a mounting kit for attaching it to a wall. Before you affix the camera in position, please ensure the cable is of adequate length to reach the DVR.

1.6 Using Remote Control



Part Names	Functions
1-8	Numeric keys. Press to display channel 1~8
9, 0	Numeric keys
ALL	Press to display all channels. Multiple display mode
Menu	Press to enter or exit the Main Menu
Mute	Mute On/off
Submenu	Go to submenu
▲	Up arrow key; Volume increase
Sel	Press to enter the selected menu item and edit the setting
◀▶	Left/Right key; Decrease/increase parameter value of control bar
▼	Down arrow key; Volume decrease
◀◀	Press to rewind during video playback
▶▶	Press to fast forward during video playback
▶	Press to play recorded video or enter the recording search menu
●	Press to start manual recording
■	Press to stop manual recording or stop the video playback
	Press to pause the video playback or enter frame-playback mode

1.7 Using the Mouse



1 Left Button:

- Click to select menu options.
- During live viewing in split-screen view, double-click on a channel to view it in full-screen. Double-click the channel again to return to split-screen viewing.
- Click upon a channel on Live Viewing screen to open Camera Quick Tool bar.
- Click and hold to drag sliders and scales on menu mode

2 Right Button:

- Click once to open the Task bar on the Live Viewing screen.
- In menus, click to go back / close menus.

3 Scroll Wheel:

- In menus, scroll to move up / down through the menu content.
- While hovering over the volume control wheel, scroll to turn system volume up / down.

2


BASIC **OPERATION**

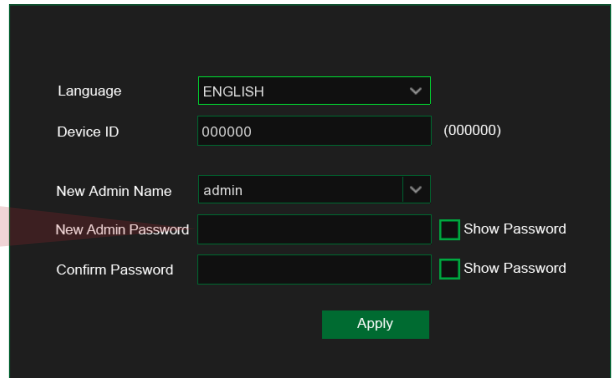
2.1 Start-up wizard

1 Create a Password

Please create a user name and password for your device. Password **MUST** be **8 characters** long.



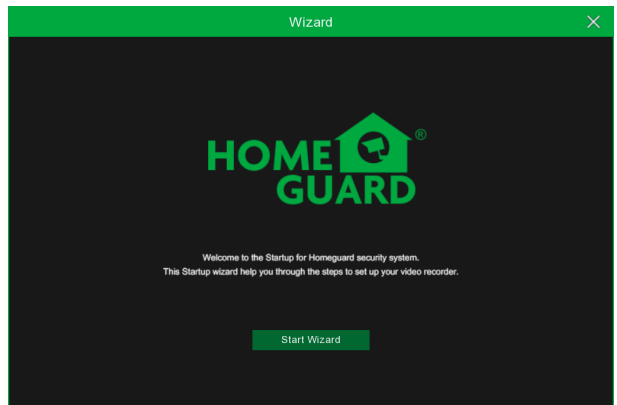
Use the on-screen keyboard to input text, numbers and characters. Click  to change from lower-case to upper-case



Language: ENGLISH (dropdown)
Device ID: 000000 (000000)
New Admin Name: admin (dropdown)
New Admin Password: [input field] Show Password
Confirm Password: [input field] Show Password
Apply (button)

2 Start Wizard

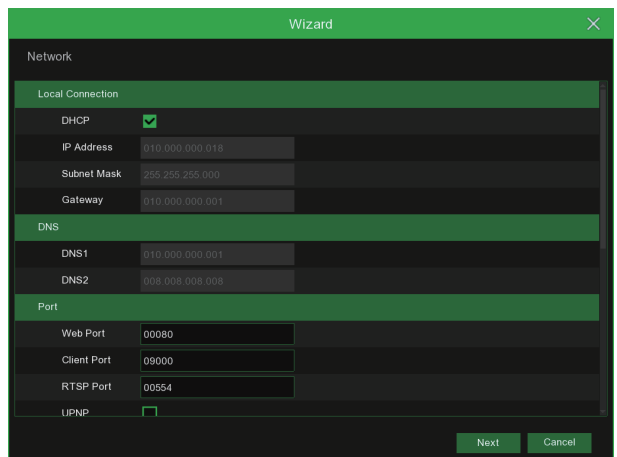
After DVR startup is completed, the start-up wizard will be displayed. Click **"Start Wizard"**.



3 Network

In DHCP mode the router will automatically assign an IP address to DVR.

If the DVR fails to obtain an IP address, refer to the DVR Router Guide. If the problem still cannot be resolved, contact technical support.

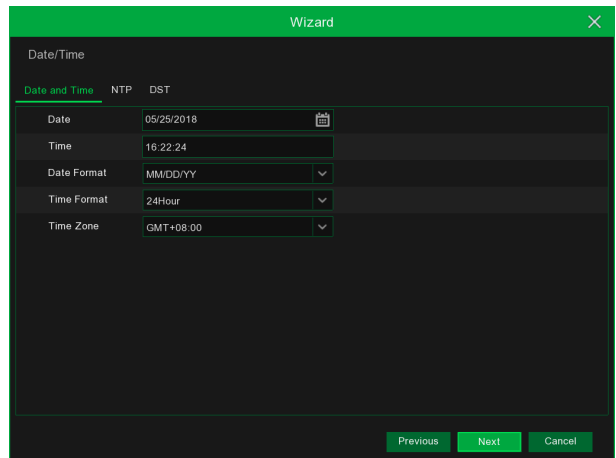


Wizard (title bar)
Network
Local Connection
DHCP:
IP Address: 010.000.000.018
Subnet Mask: 255.255.255.000
Gateway: 010.000.000.001
DNS
DNS1: 010.000.000.001
DNS2: 008.008.008.008
Port
Web Port: 00080
Client Port: 09000
RTSP Port: 00554
UPNP:
Next (button) Cancel (button)

CAUTION Don't forget to write down your password: _____.

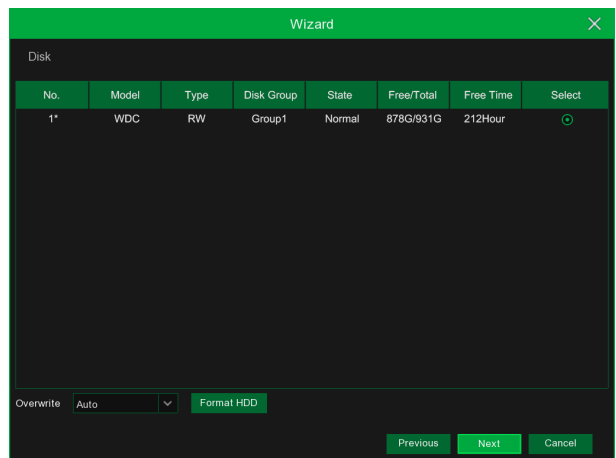
4 Date / Time

Set the date, time, NTP, DST.



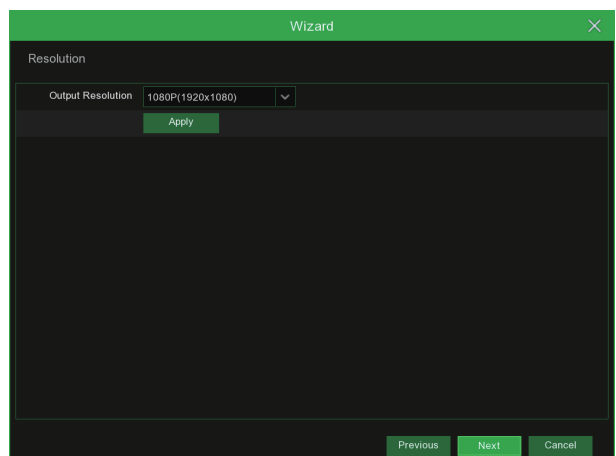
5 Disk

New hard drive(s) connected must be formatted before use. Upon connection, it will indicate to format new hard drive. Click on **"Select"** to select the unformatted hard drive. Click on **"Format HDD"** to pop up the user login window and enter the password to log in. A notice window will indicate "Entire Data Will Be Erased. do You Want To Continue?". Click **"OK"** to format the disk. When the progress bar is complete, the formatting process is completed.



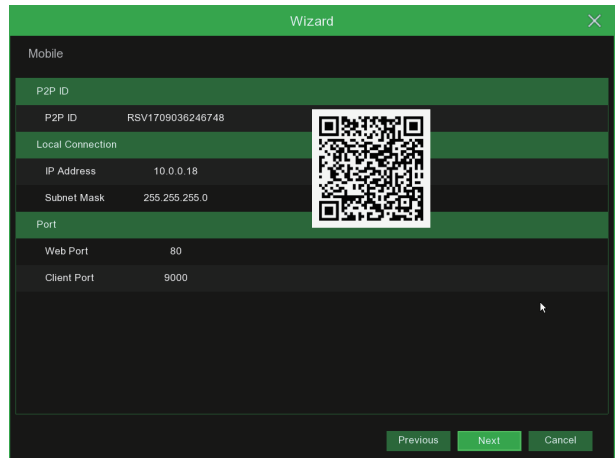
6 Resolution

Select the resolution for the HDMI output of your monitor.



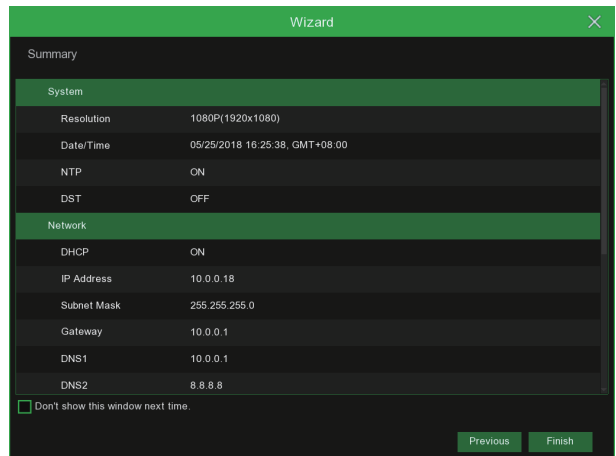
7 Mobile

If you scan a QR code using **Homeguardsafe**, the device ID displayed in the DVR will be automatically reflected in the Mobile Viewer ID, and you can use the Mobile Viewer immediately by entering the ID / password of the DVR.



8 Summary

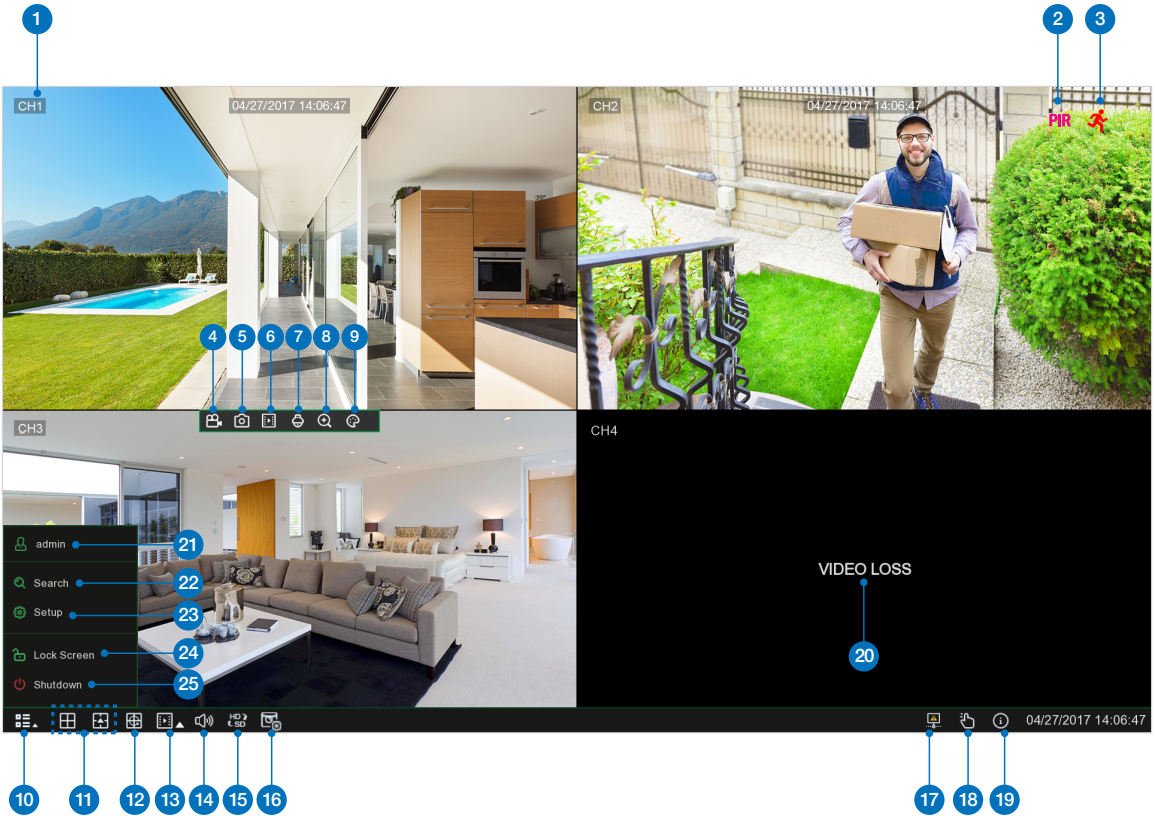
Shows system and network status of DVR.



9 Click on "Finish" to finish setting of startup wizard.

You can click on **"Don't show this window next time"** if you do not wish to have the wizard setting to appear next time.

2.2 Main Interface



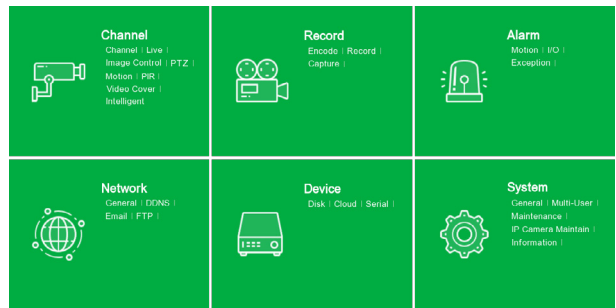
Items	Part Names	Functions
1	Channel Name	Display channel name
2	PIR	This icon appears when the camera has PIR detection
3	Motion Detection	This icon appears when the camera has detected motion
4	Manual Recording	Enable or disable manual recording
5	Manual Capture	Make a snapshot of current video
6	Instant Playback	Playback of the last five minutes of the video
7	PTZ	Click to enter PTZ control panel
8	Zoom	Hold and drag mouse cursor to select a frame of current video to zoom in
9	Color Setting	Set hue, brightness, contrast and saturation of current channel

Items	Part Names	Functions
10	Main Menu	Access the main menu
11	4-Channel Layout	Display four channels of video
	More Layout	Click to choose more layouts for live view
12	Auto SEQ	Press this button to switch the screen mode in sequence
13	Play	Replay video recorded
14	Audio	Click to adjust audio volume
15	Stream Switch	Click to switch all IP channels between main stream and sub stream
16	Preview Policy	Click to switch among real-time, balanced, or smooth view
17	Connection State	Display the network connection status
18	Manual Mode	Set manual recording mode
19	System	System Information
20	Video Loss	Camera is off-line
21	Admin	To switch user
22	Search	Search & Playback
23	Setup	Click to access DVR System Setup menu
24	Lock Screen	Lock & unlock screen
25	Shutdown	Shutdown, reboot & logout the system

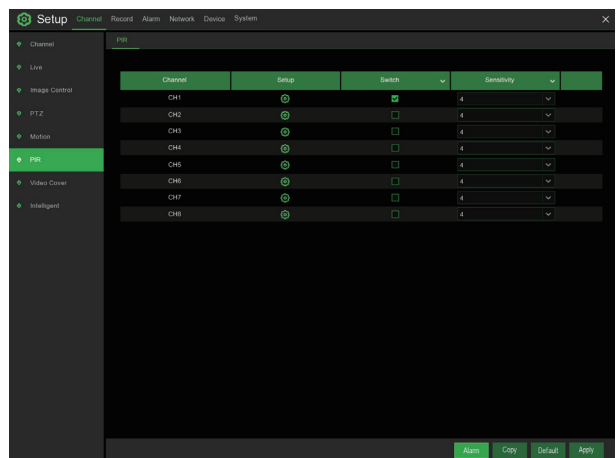
2.3 PIR Setup

PIR is advanced motion detection that senses body heat and reduces false alarms. The PIR Technology takes your motion detection to the next level by greatly reducing inaccuracies and false motion alerts. Homeguard camera's PIR sensor can detect changes in heat produced by humans, animals and vehicles. This new technology requires both changes in motion and heat be detected simultaneously. Not only does this innovative technology significantly reduce the number of false alerts you receive, it also conserves hard drive space. It is true and smart detection!

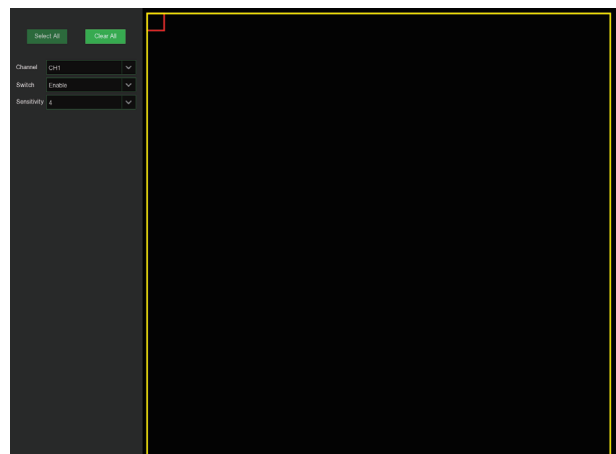
- 1 Access **Main menu** → **Setup** → **Channel** → **PIR**.



- 2 Click Setup button  to set the PIR detect field.

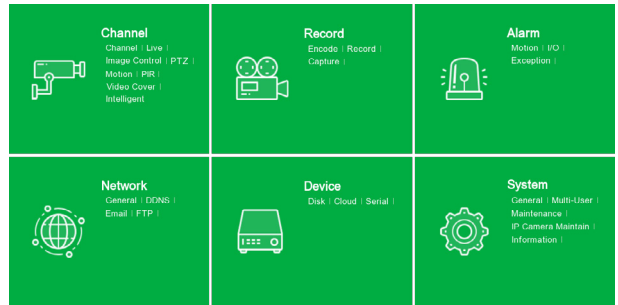


- 2 click "**Select all**" to set all of the field. Right click and exit, then click "**Apply**" to save the setting.



2.4 Record

1 Access Main menu → Setup → Record → Record

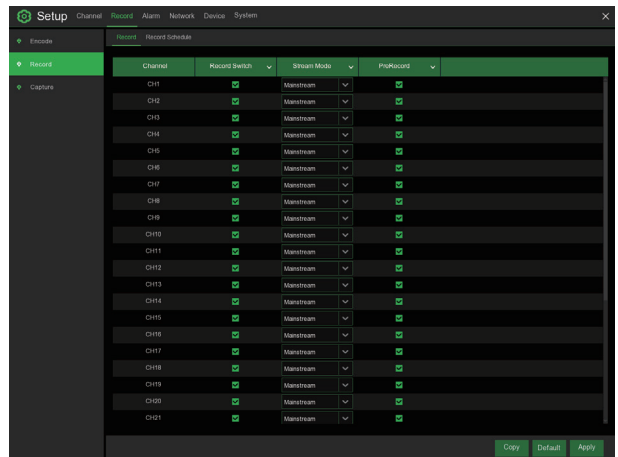


2 Record

Record Switch: Check to enable the recording in this channel.

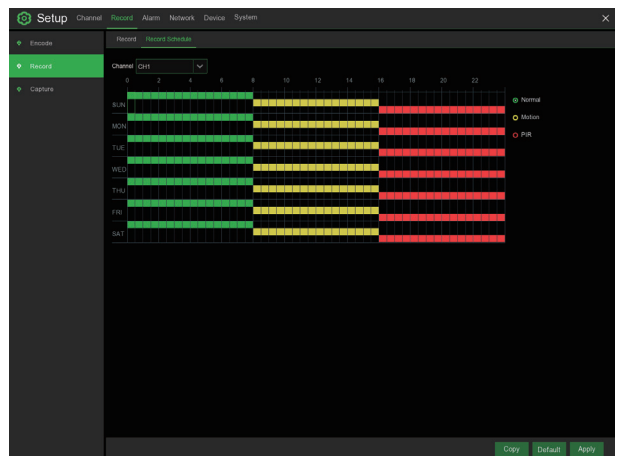
Stream Mode: Choose the recording quality. If you choose Dualstream, the system will record in both Mainstream & Substream.

PreRecord: If this option is enabled, the DVR starts recording a few seconds before an alarm event occurs. Use this option if your primary recording type is motion or I/O alarm based.



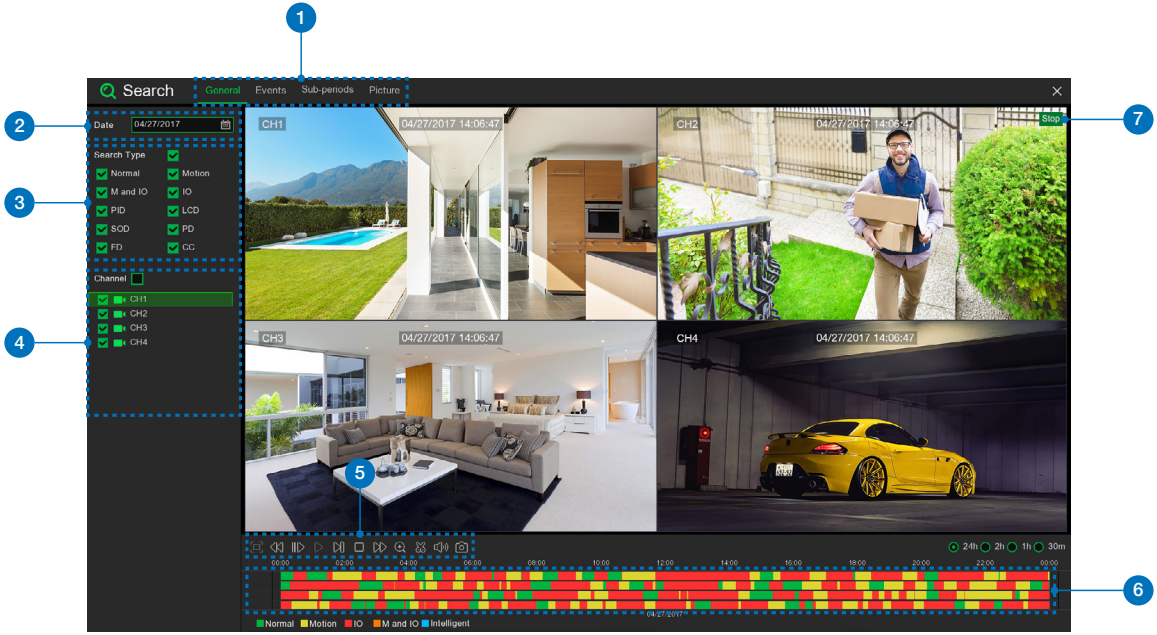
3 Record Schedule

This menu allows you to specify when the DVR records video and defines the recording mode for each channel. The recording schedule lets you set up a schedule like, daily and hourly by normal (continuous) recording, motion recording, PIR recording. To set the recording mode, click first on the mode radio button (Normal, Motion, PIR), then drag the cursor to mark the slots.



2.5 Playback

Click **Search** button in the **Main Menu** to enter search / playback section.



Items	Part Names	Functions
1	Search Options	The system provides various search & playback methods: General, Events, Sub-periods, Smart & Pictures
2	Search Date	Search by a date to play back.
3	Search Type	The system provides different search types to narrow your search.
4	Channel Selection	To choose the channels you want to search & play.
5	Video Playback Controls	To control the video playback.
6	Timeline	Continuous recordings are shown with colored bars to represent different types of recording (legend shown in the bottom-right corner of the display). Use the timeframe options.
7	Playback Status	Display the video play status.

CONNECTING
SMART DEVICE

3

3.1 Before Start

- Make sure you have a router and high-speed Internet access (not included).
- Connect your DVR to your router using an Ethernet cable (see the Quick Connection Guide for details).
- Upgrade your DVR firmware and client software or mobile app to the latest versions.
- Please note that an upload speed of 1Mbps is required for remote video streaming.
- Up to 3 devices may connect to the system at the same time.



3.2 Get the App

For the best experience, download the Homeguardsafe app for your smartphone by scanning the QR code below or searching for “ **Homeguardsafe** ” in the App Store or Google play.



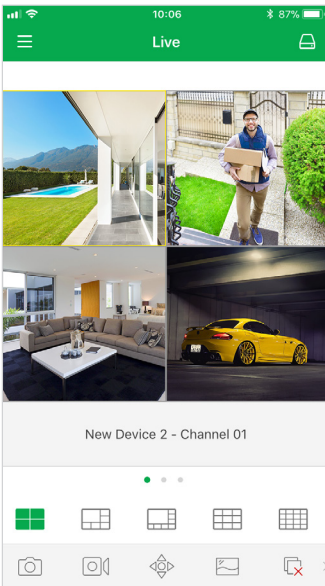
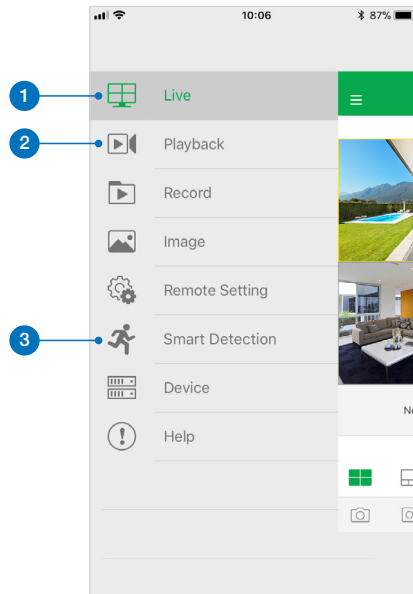
iOS - iPhone & iPad



Android - Phone & Pad



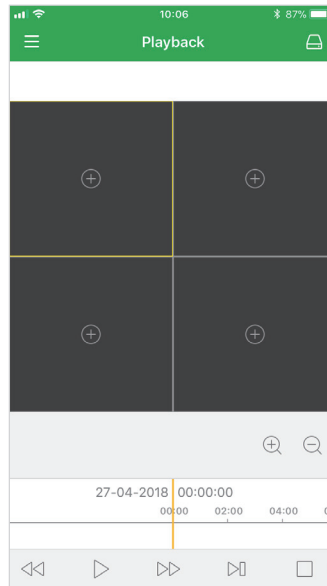
3.3 User Interface



1

Live View

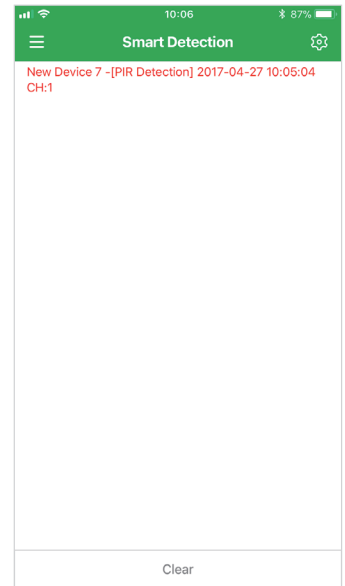
Displays real-time footage of your system.



2

Playback

Play video that has been recorded on your DVR.



3


Smart Detection

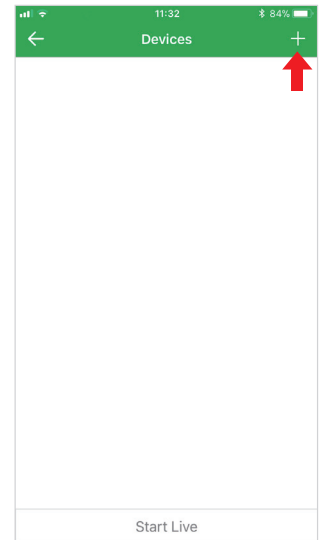
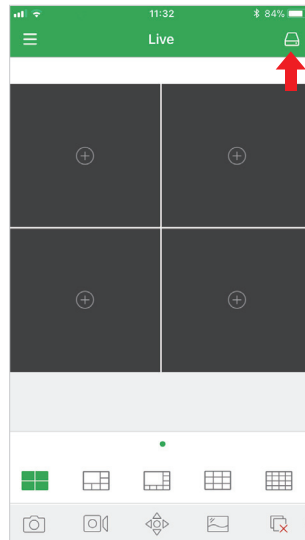
Access the Smart Detection notification list and to enable push notifications.


3.4 For iPhone

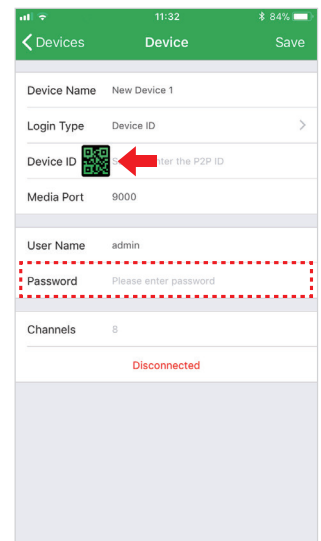
- 1 Install the free **Homeguardsafe** app from the App Store. Tap the **Homeguardsafe** icon to open the app.



- 2 After start app, tap  to open device list page, click “+” to add a new device.



- 3 Tap  to scan QR code, then enter the password of DVR.




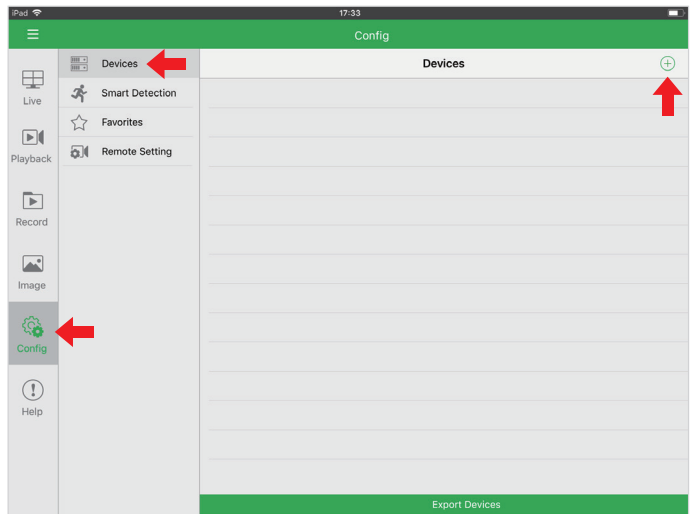
- 4 Tap “**Save**” to add DVR. The app opens in Live View and streams video from all connected cameras.


3.5 For iPad

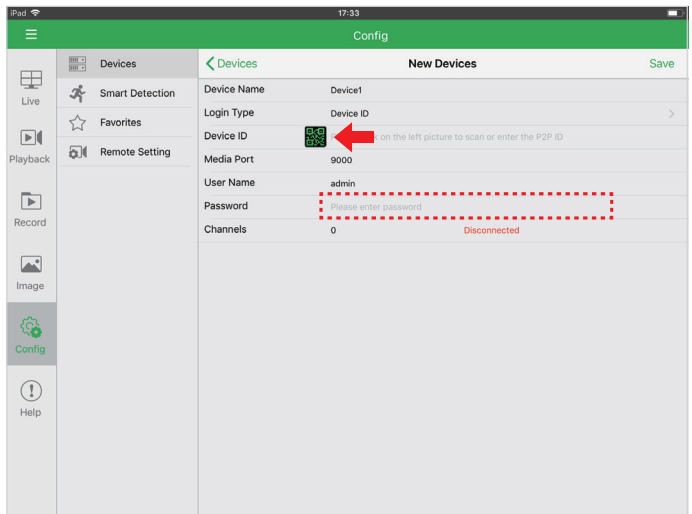
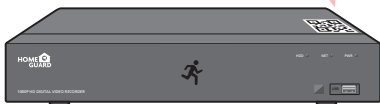
- 1 Install the free **Homeguardsafe** app from the App Store. Tap the **Homeguardsafe** icon to open the app.



- 2 After start app, tap  to open device list page, click “+” to add a new device.



- 3 Tap  to scan QR code, then enter the password of DVR.




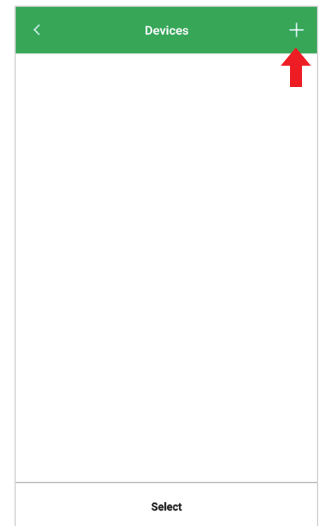
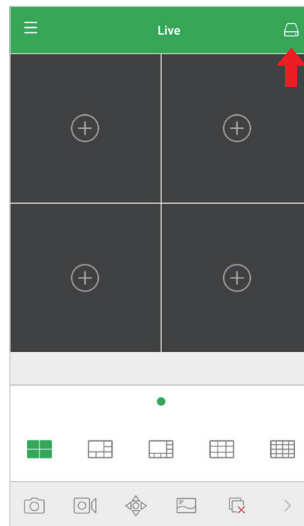
- 4 Tap “**Save**” to add DVR. The app opens in Live View and streams video from all connected cameras.


3.6 For Android

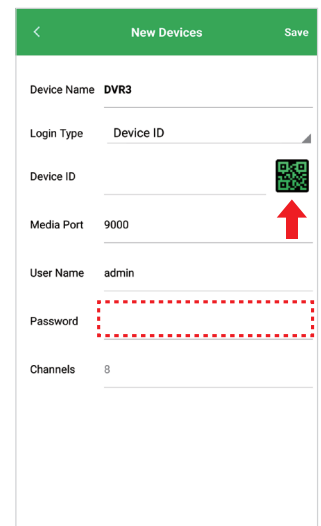
- 1 Install the free **Homeguardsafe** app from the Google Play. Tap the **Homeguardsafe** icon to open the app.



- 2 After start app, tap  to open device list page, click “+” to add a new device.



- 3 Tap  to scan QR code, then enter the password of DVR.



- 4 Tap “**Save**” to add DVR. The app opens in Live View and streams video from all connected cameras.

CONNECTING **TO PC&MAC**

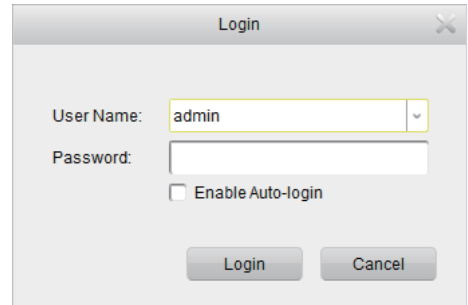
4

4.1 Homeguardsafe Software for PC & Mac

- 1 Find the setup file of digital surveillance central management software named "Homeguardsafe" from CD, and install it.

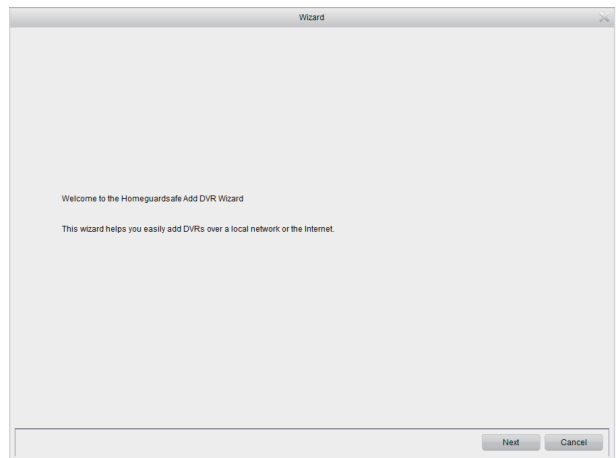


- 2 Double left click the icon to pop up [LOGIN] interface, Input your user name & password you like, and click "Login" to enter the system.

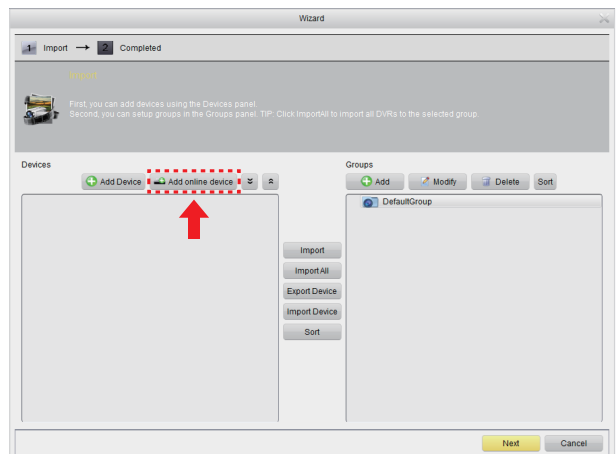


- 3 Run Homeguardsafe and Add Device Wizard will be opened. Click Next.

Note: If Add Device Wizard is not opened, please single click **Help** to manually open it.

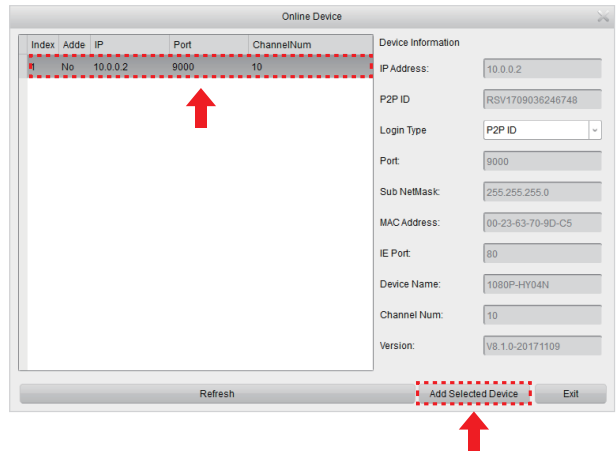


- 4 Click Add Online Device and the client software will scan all the online network DVRs in LAN.

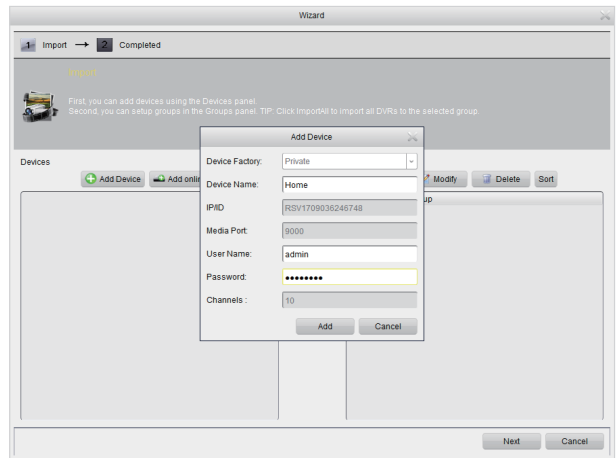


- 5 Click a DVR in the list and the added devices, IP address, port and channel number will be displayed. Click **Add Selected Device** to add.

Note: If your DVR is not available in the list, click **Exit** and then click **add Device** to manually input the IP address of DVR.

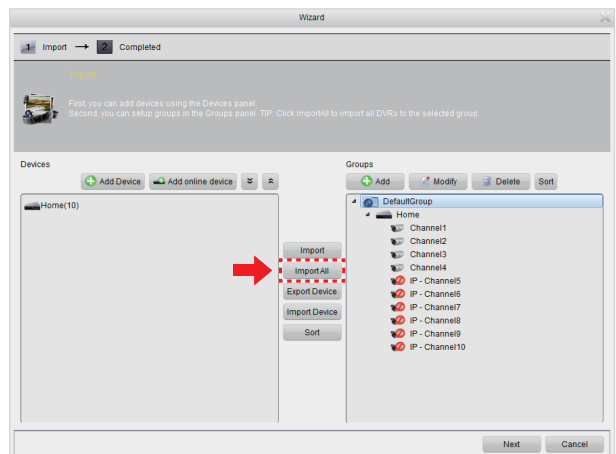


- 6 Input the name of the selected DVR, e.g. home, office, etc. Input the DVR user name and password. Click **Add**.

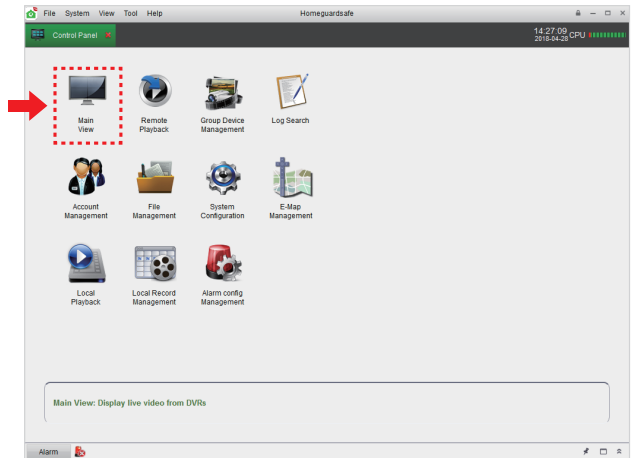


- 7 Click **Import All** to import all DVRs to the default group.

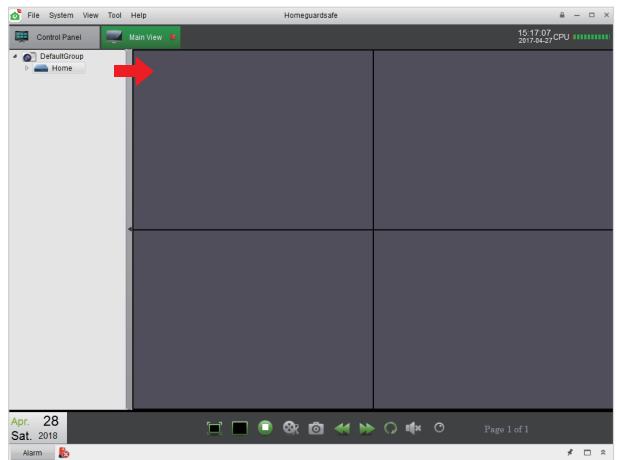
Click **Next** and then click **Finish** to complete the wizard.



8 Click **Control Panel** option. Then Click **Main View**.



9 Click and drag the default group to the display window to access real-time footage of your system.



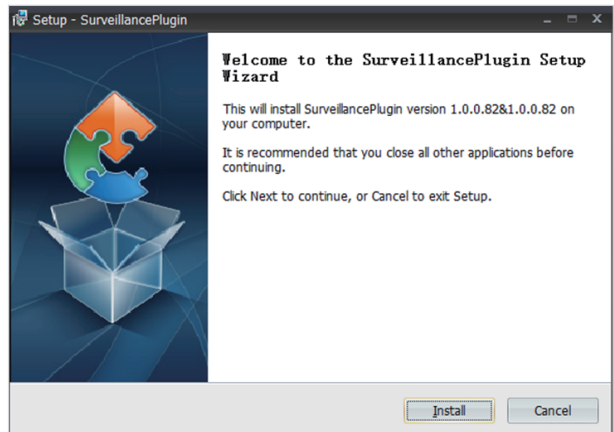
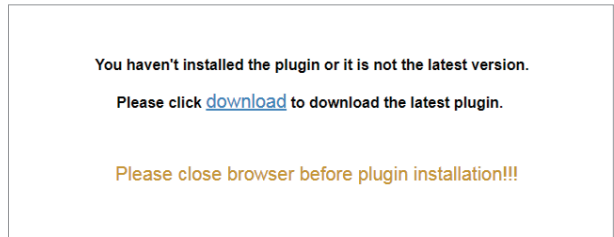
4.2 Remote Access via Web Client

For IE/Chrome/Firefox

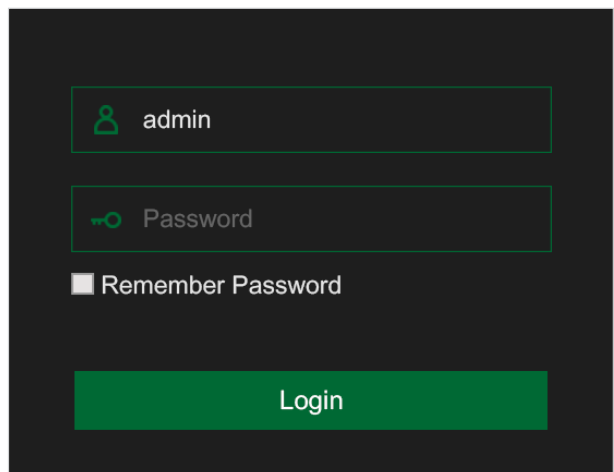
1 Launch the explorer on your PC and enter the DVR IP address or DDNS domain name (Host Name) you have set on DVR in the URL box.

2 For the first time you run the web client, system will require to install the web client plugin.

Click download to download the plugin and install to your computer.



3 After installing the plug-in, close & launch again your browser and repeat step 1 to open the login page. Input your user name and password to login the web client.

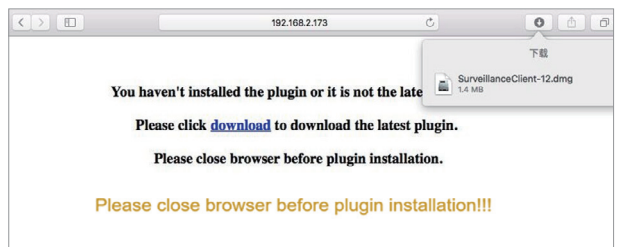


For Mac Safari

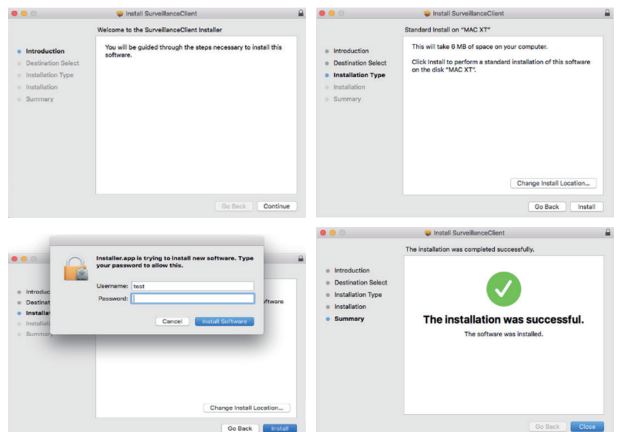
- 1 Launch the Safari in your Mac, and enter the DVR IP address or DDNS domain name (Host Name) you have set on DVR in the URL box.



- 2 Download the plug-in "SurveillanceClient.dmg", locate the downloaded file and double click it.



- 3 Click on "Continue" → "Install". Enter user name and password for Mac computer, Click on "Install Software" → "Close" to finish installation.



- 4 Close Safari and open again to repeat step 1 to open the Web Client login page.

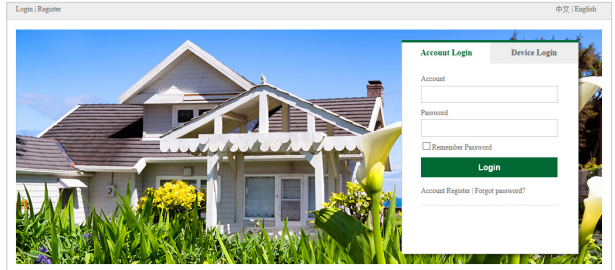
Live Interface



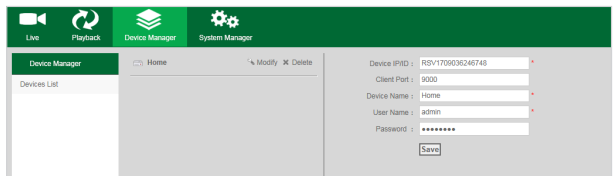
Items	Functions
1	Channel List
2	Live Video Stream Options
3	Main Menus
4	Information: Hover over to see system details
5	Exit
6	Color Controls: Click to display or hide the color controls
7	PTZ Controls: Click to display or hide the PTZ controls for using PTZ cameras
8	PTZ Controls: PTZ control menu
9	Live View Control Buttons
10	Navigation: Shows current page number for the channels shown on screen. Use the arrow keys to switch between pages
11	Page View: Click to select how many channels appear on screen at a time

4.3 Homeguard Cloud Access

- 1 Open your browser, go to **www.homeguardsafe.com**
Please sign up and login.



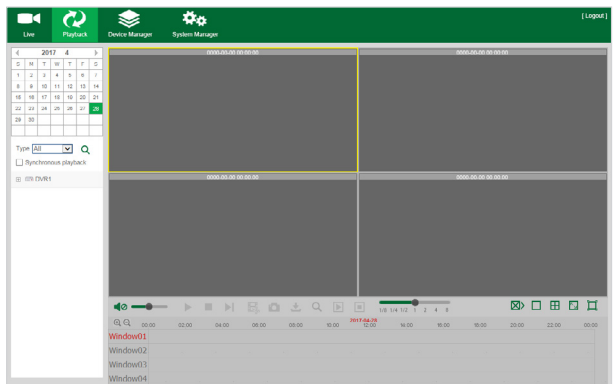
- 2 Click **Device Manager**, input the device information and click **save** to add DVR.



- 3 Click **Live**, Click ▶ to Displays real-time footage of your system.



- 4 Click **Playback**, you can play video that has been recorded on your DVR.



TECHNICAL **SUPPORT**

5

5.1 Technical Specifications

Homeguard Hybrid DVR



Compression	H.264 Standard Compression
Operating System	Linux
Smart Device Support	Apple iOS(iPhone/iPad) and Android Phones and Tablets
Dual Stream	Yes, Set by Channel
Image Quality	1080p (1920 × 1080)
Frame Rate Recording	4 Channel: 1080p 15fps per Channel 8 Channel: 1080p 15fps per Channel 16 Channel: 1080p 15fps per Channel
Image Playback Quality	1080p 4 Channel DVR: 60fps (15fps for 4 Channels) 1080p 8 Channel DVR: 120fps (15fps for 8 Channels) 1080p 16 Channel DVR: 240fps (15fps for 16 Channels)
Video Mode	Manual, Automatic & Motion Detection
Backup Capability	USB Devices (Hard Disk, Flash Drive, DVD/RW etc.), Webpage, CMS, Mobile Client
User Control	Mouse or Remote Control (Both Included)
Signal Input	CVBS, TVI, AHD, CVI, IP (optional), 5 in 1 Hybrid DVR
Video Input	4 Channel: 4 × BNC 8 Channel: 8 × BNC 16 Channel: 16 × BNC
Video Output	1 × HDMI
Audio Input	
Audio Output	1 × HDMI
Network Interface	100M Ethernet (RJ-45)
USB Port	2 × USB 2.0
RS485	-
Alarm Input / Output	No Alarm Input or Output, Not Supported
Interface	1 × SATA HDD, Maximum Support to 6TB
Power	12V/2A
Operating Temperature	-10°C ~ 55°C
DVR Size	300 × 208 × 53mm

5.2 Technical Q&A



01: The DVR doesn't start once the power supply is connected

Please check the power switch at the rear panel of DVR.

Please check the power supply you are using is rated 12V/2A or above.

02: The DVR turns on but stays at the welcome screen

The hard drive may be faulty

The software may be corrupted.

03: The DVR is very slow to start

It may be that the hard drive is nearly full, causing the system to search for longer for the files required

A hard drive error can cause this delay.

04: The system reboots repeatedly

Check the hard drive is formatted to FAT32

Check the power supply is of the correct rating

Disconnect the network cable and check if the DVR becomes stable.

05: The DVR stops during playback

Check the hard drive is working correctly

Check the DVR is not getting too hot

Check there are no external electrical devices drawing too much current near the DVR.

06: The firmware upgrade has failed

Check the USB drive used is compatible with the DVR

USB interface is faulty.

07: The picture displayed is black and white

Check the video parameters are matching between you DVR and TV or monitor.

08: There is no image displayed

Ensure your TV or Monitor is switched on and the image properties are correct (brightness, etc)

Check that the video cables are properly connected.

09: The video is distorted

Check for damage on the video cable

If the video is obstructed by interference, select a shielded cable

Ensure only one grounding point is selected on the DVR.

10: The colours displayed are distorted

Check the video parameters are correct

Check the camera connection is good.

11: The video is skewed or deformed

Make sure the HDMI cable and DVR are connected with grounding properly;

Make sure the DVR is not too hot.

12: The playback quality is poor

The recording parameters are set too low

The video files are located on a bad sector of the hard drive.

5.3 Warranty & Support

All the products sold are covered by 24 months warranty from the date of invoice.

Warranty instructions:

1. Please contact us when the product is caused by its own fault within 2 year warranty.
2. Please mail us your written warranty card as soon as possible after purchasing our products so that we can repair or replace this product to its original operation condition. Or the company will not deal with it.
3. Please write the truth on the warranty card.
4. Paid for repairing as follows:
 - A. Equipment failure caused by human operation
 - B. Equipment failure caused by not conforming to the using environment
 - C. No warranty card
 - D. Warranty expired

Product model: _____

Product serial number: _____

Purchase date: _____

User name: _____

Contact person: _____

Telephone: _____



Note: Please keep the warranty card for the better service.

Technical support

www.iget.eu/cs/helpdesk-centrum-cs

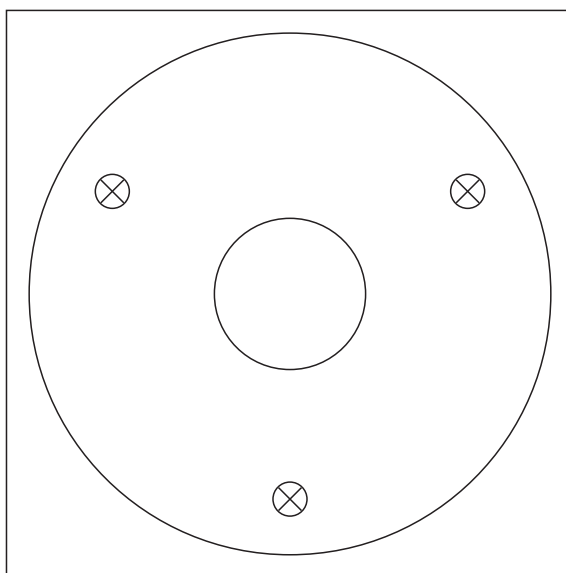
<https://helpdesk.intelek.cz/>

5.4 Camera Installation Template

To make camera installation easier, you can tear off this page and adhere it to the place you would like to install your cameras.

TEMPLATE

This template is used to install the camera on the wall



CAMERA FRONT

